



让检测更轻松



微信二维码参看操作视频

1.

" "

2.

50

3.

220V

1.1

ConST

ConST

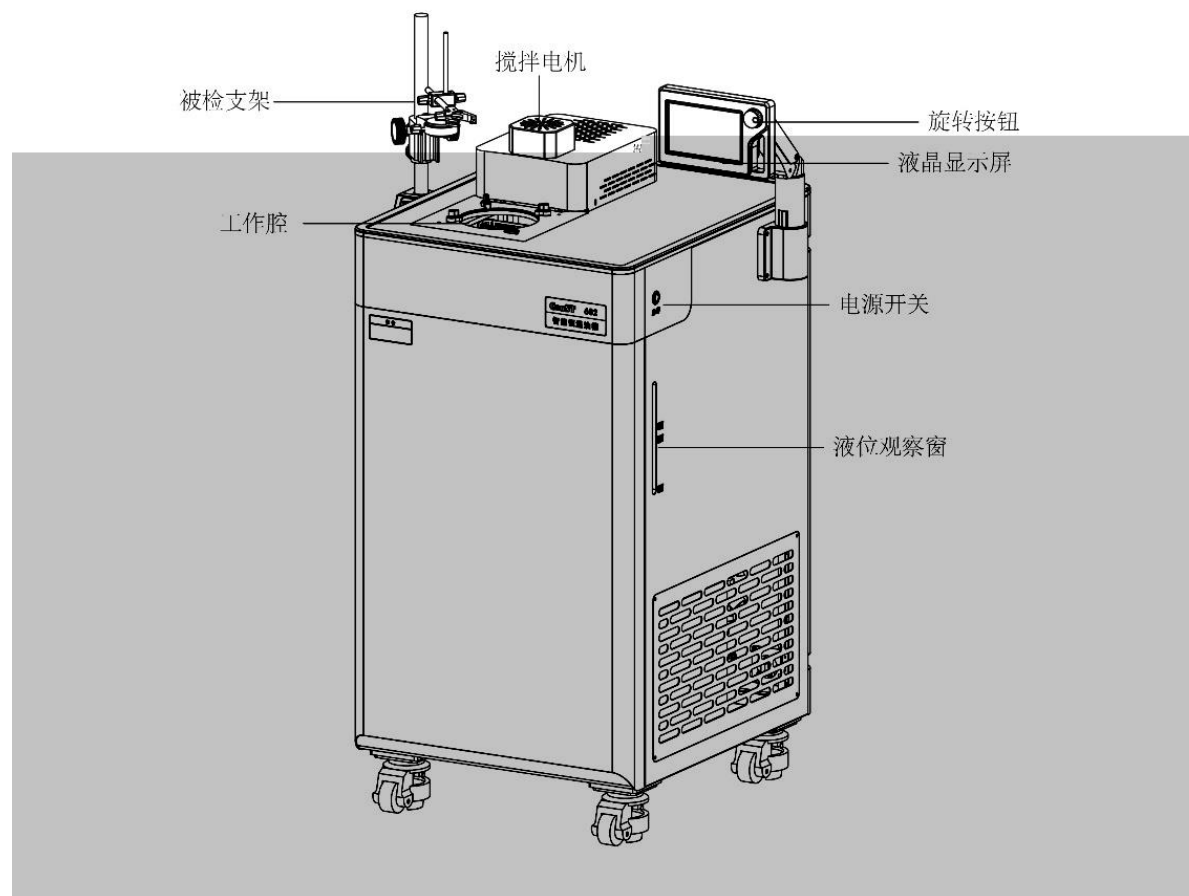
+86 010 56973333

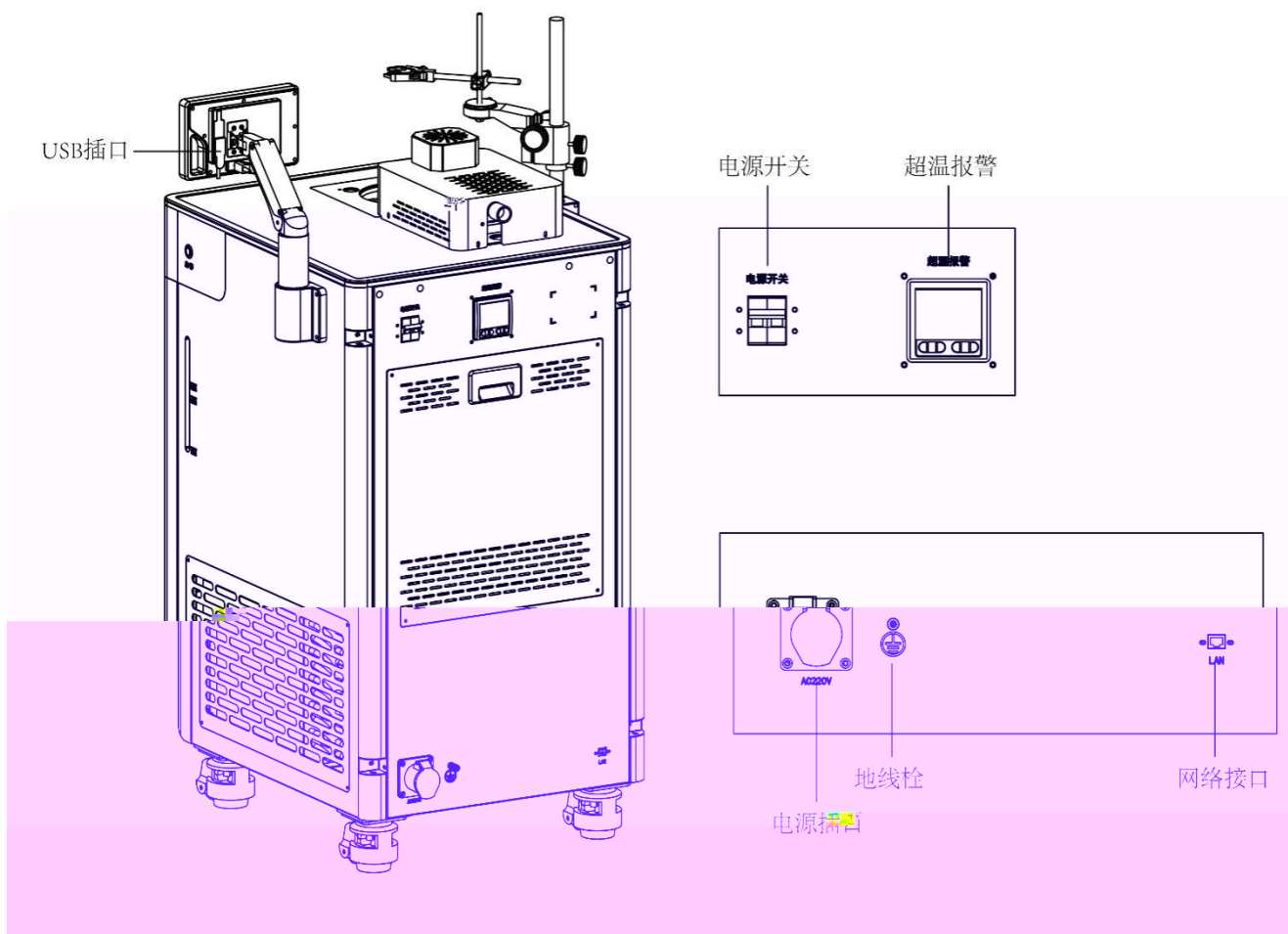
www.constgroup.com

1.2

	ConST681	ConST681-A	ConST681-S	ConST682	ConST682-S	ConST681-M
RTD						
WIFI						

1.3





1.4

6

ConST682/682-S 681-M

AA

± 0.15

:

IP67

TFT

ACloud

USB LAN Wi Fi

1.5

15 25 ; 30%RH 70%RH

0 50 ; 10%RH 90%RH

3000

	1115mm× 590mm× 700mm	145mm
	3.5kW	2kW 650W
	220VAC 50Hz	
	USB LAN Wi Fi	USB LAN Wi Fi

	ConST681-M	ConST682	ConST682-S
	1 0.1 0.01 0.001		
	K		
	-30 160	90 300	90 300
	138mm× 450mm	126mm× 450mm	126mm× 450mm
	-30 100 4121	0 160 4004	4005
	± 0.005 /10	± 0.010 /10 @ 20 160 ± 0.020 /10 @ 0 20	± 0.005 /10

	: 0.010 : 0.010	: 0.010 @ 20 160 : 0.050 : 0.050 @ 0 20	: 0.010 : 0.020	0.006 0.006	0.010 0.010
	+ (18L) (30L)	+ (18L) (30L)	+ (20L) (30L)	+ (20L) (30L)	+ (20L) (30L)
	± 0.15	± 0.15	± 0.15	± 0.30	
	20 160 35 20 -20 40	10 /	60 300 65 10 /	60 300 65 10 /	
	(0.1 3.0) /		(0.1 3.0) /	/	
	(0.1 2.0) / @(160 100) (0.1 1.0) / @(100 0)		/	/	
	190kg		175kg	175kg	
	1115mm× 590mm× 700mm			145mm	
	3.5kW 2kW 650W		3.5kW 3kW	3.5kW 3kW	
	220VAC 50Hz				
	USB LAN Wi Fi		USB LAN Wi Fi		USB LAN Wi Fi

	ConST681	ConST681-S	ConST681-A
5m			
10m			
	BPCP07	BPCP07	BPCP07
			BPCP03
	4121 48L	4121 48L	4121 48L
2000ml			
10mm/0.5m			
10mm× 350mm 10			
16mm× 350mm 10			

	ConST681-M	ConST682	ConST682-S
5m			
10m			
	BPCP08	BPCP08	BPCP08
	BPCP04		
	4004 50L	4005 50L	4005 50L
2000ml			
10mm/O. 5m			
10mm× 350mm 10			
16mm× 350mm 10			

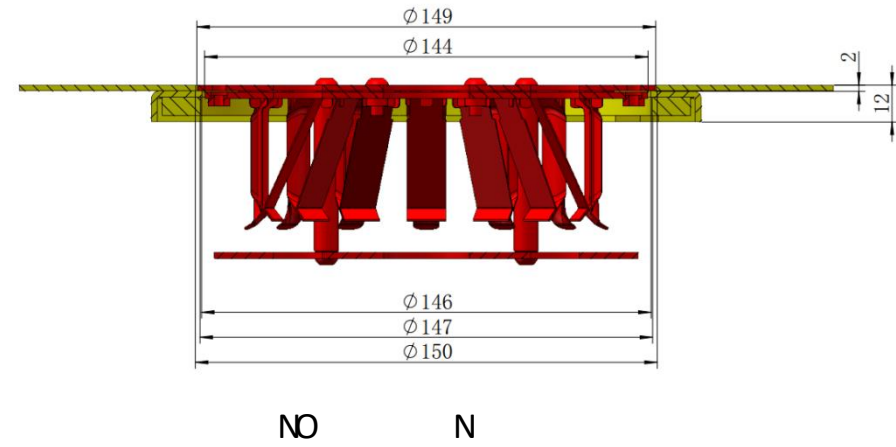
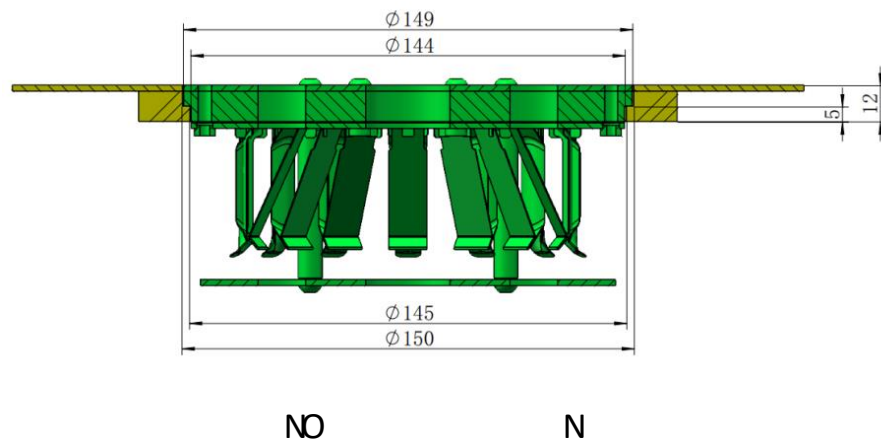
NO

NO

NO

N

1.7

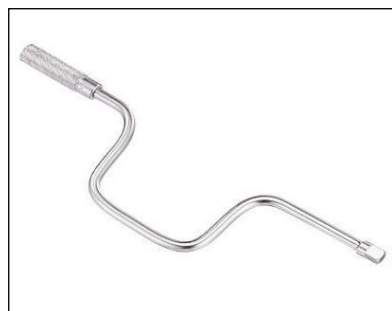




微信二维码参看操作视频

2.1

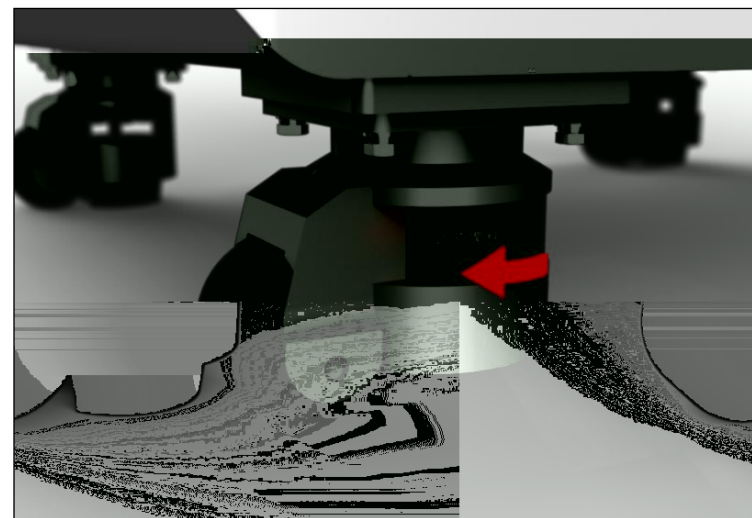
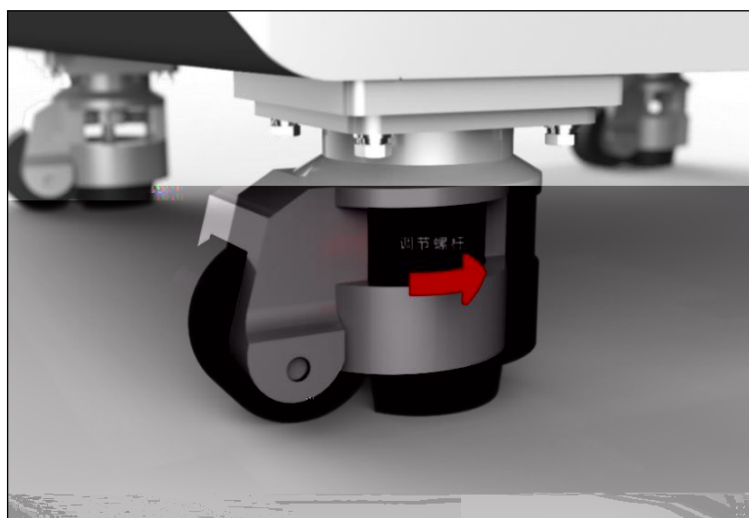
ConST



8mm套筒

2.2

ConST



2.3

ConST

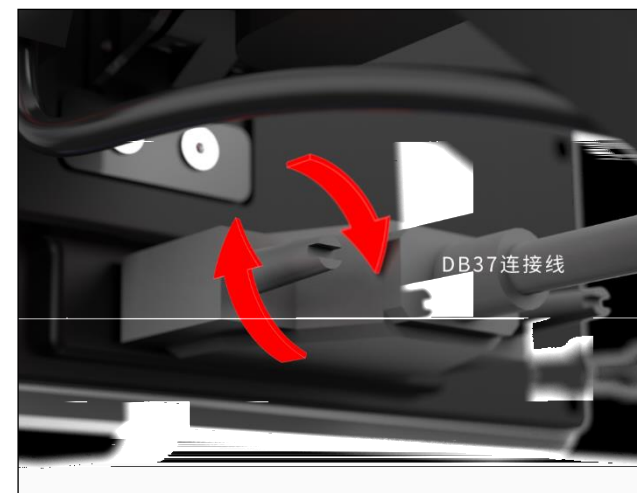
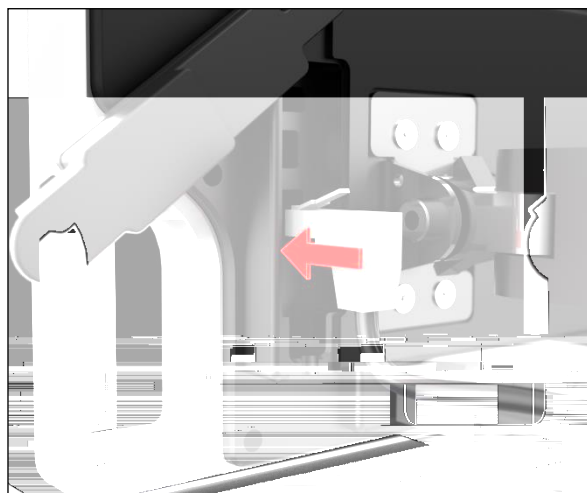
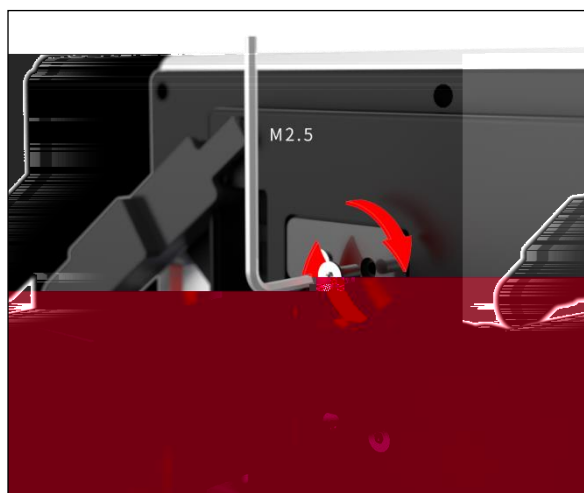
2.4

2-6

2-7

DB37

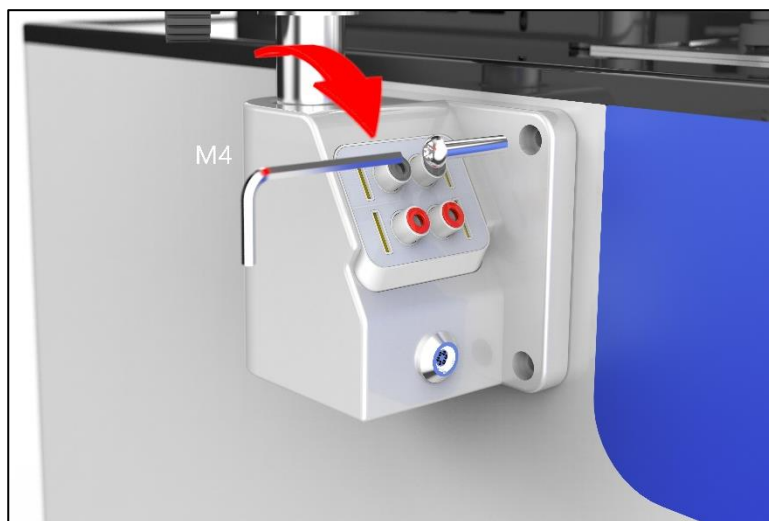
2-8



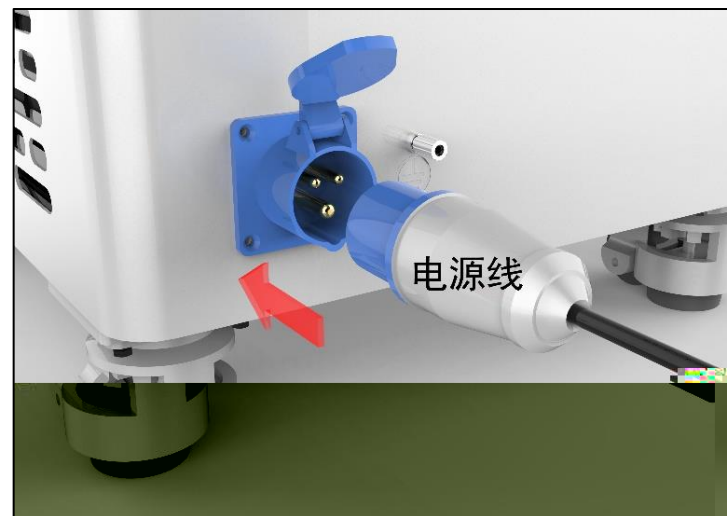
ConST681-S/682-S

2-9

2-10

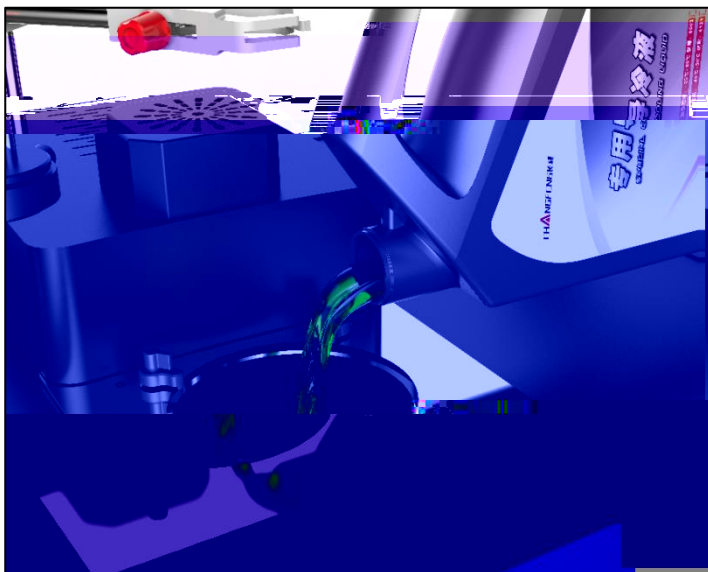


2-9

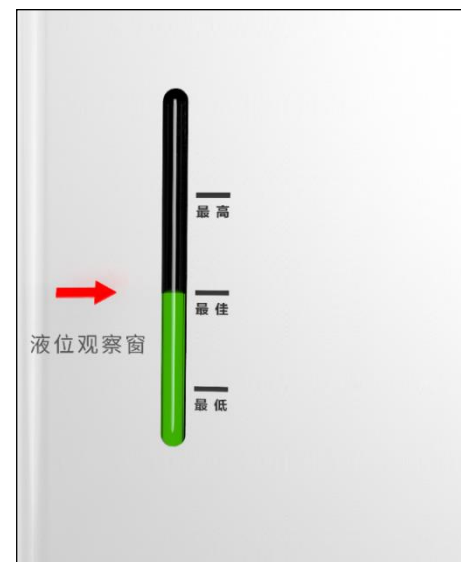


2-10

2-11

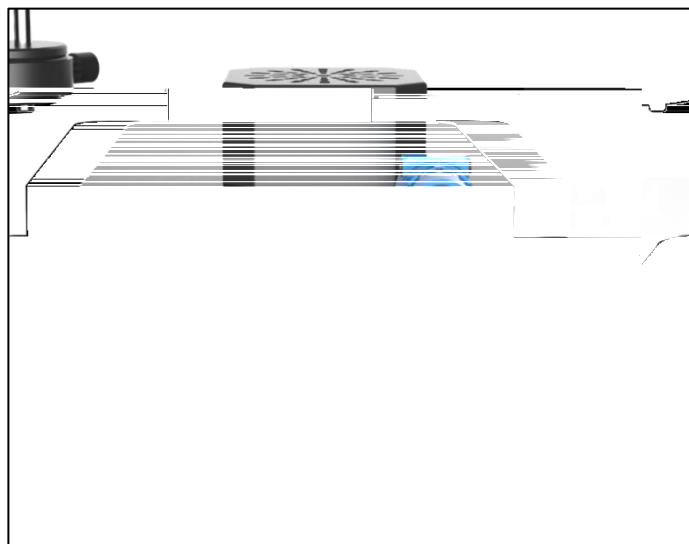


2-12

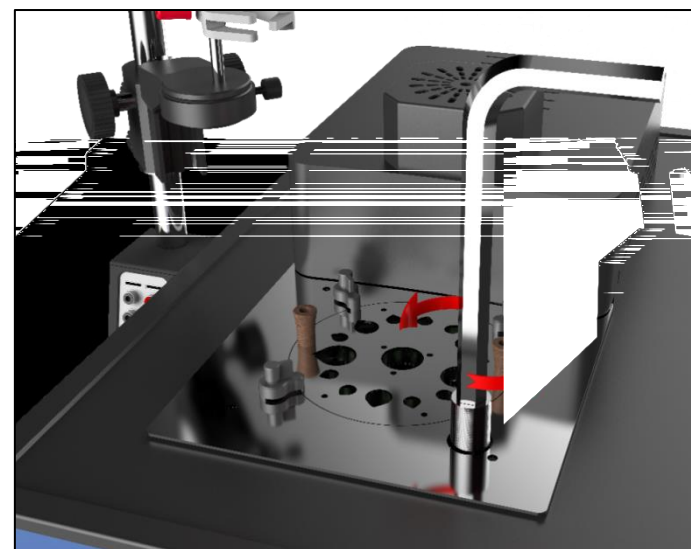


2-13

2-14



2-13



2-14

3.1

WIFI USB ACloud

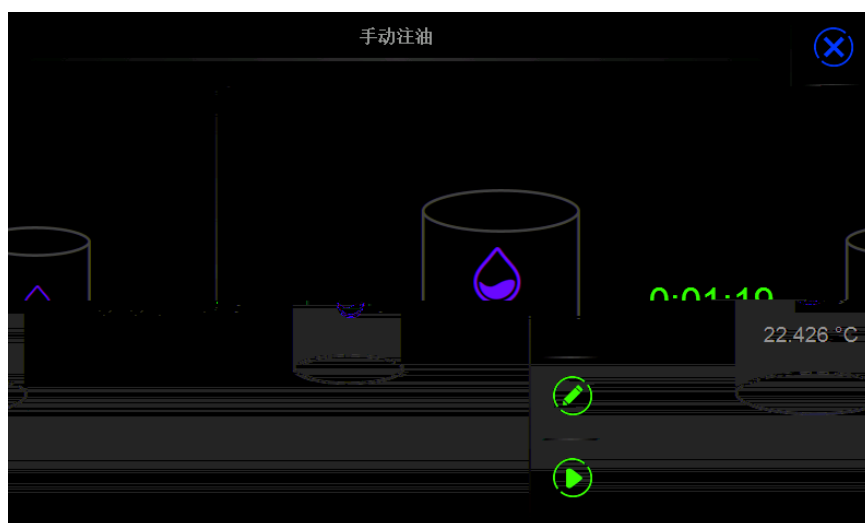


3.2

3-2



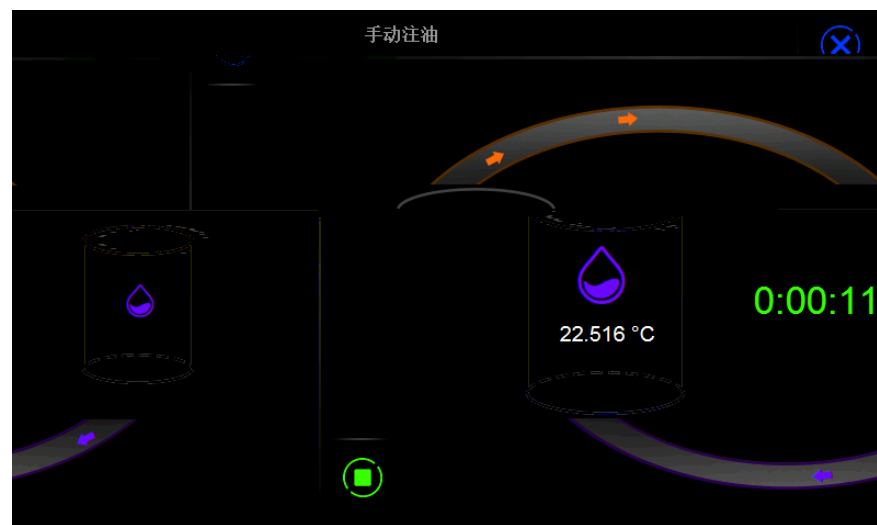
3-3



3.3



3-4



3.4

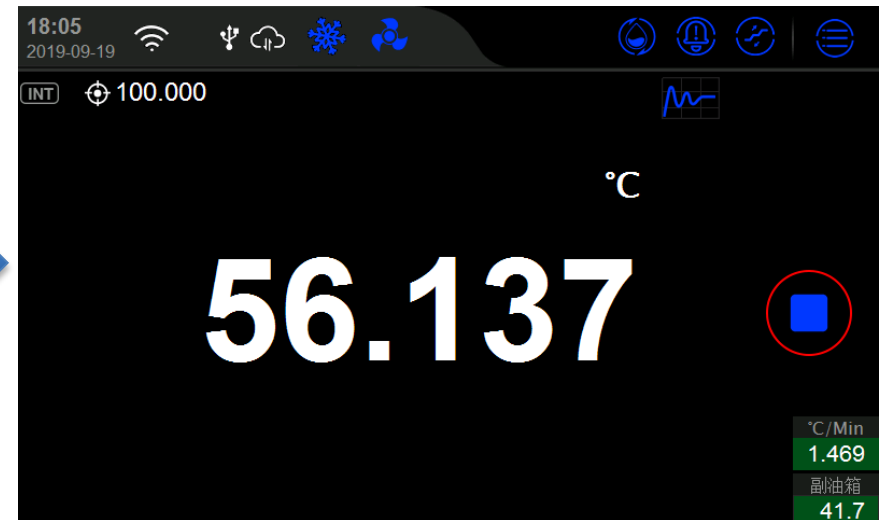
-

3-5



ConST681/682

3-6



3.5 /



3.6

3.7

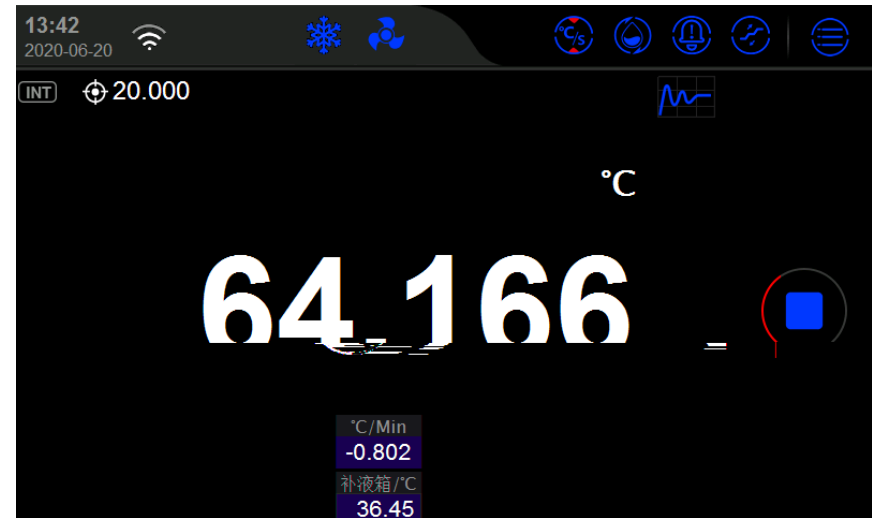
N

3.8



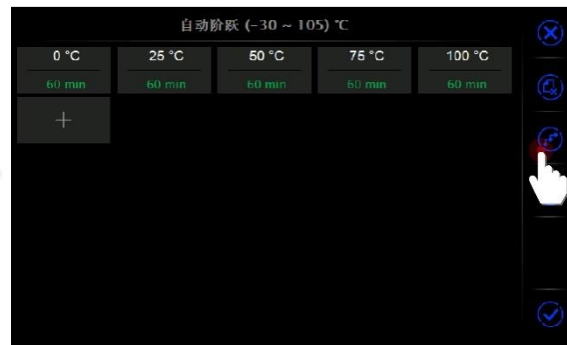


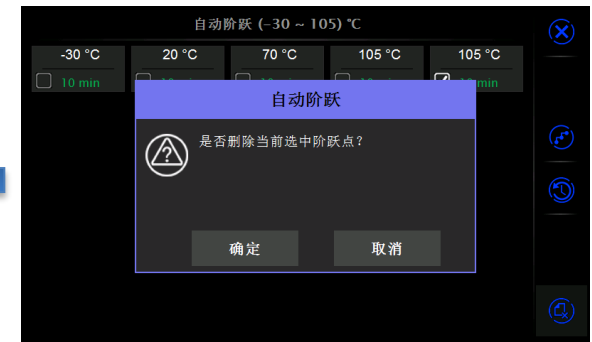
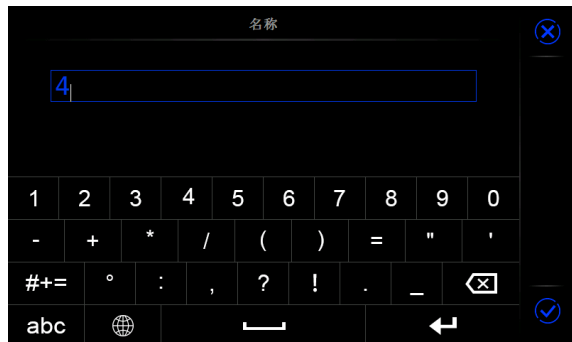
NO

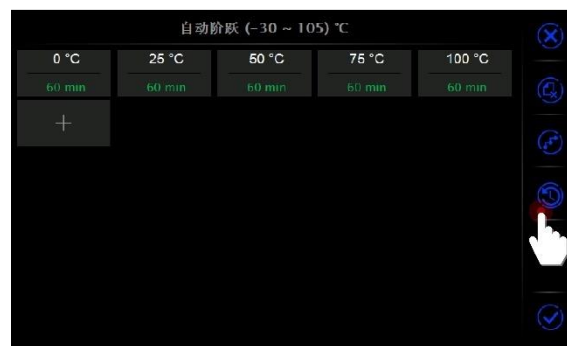


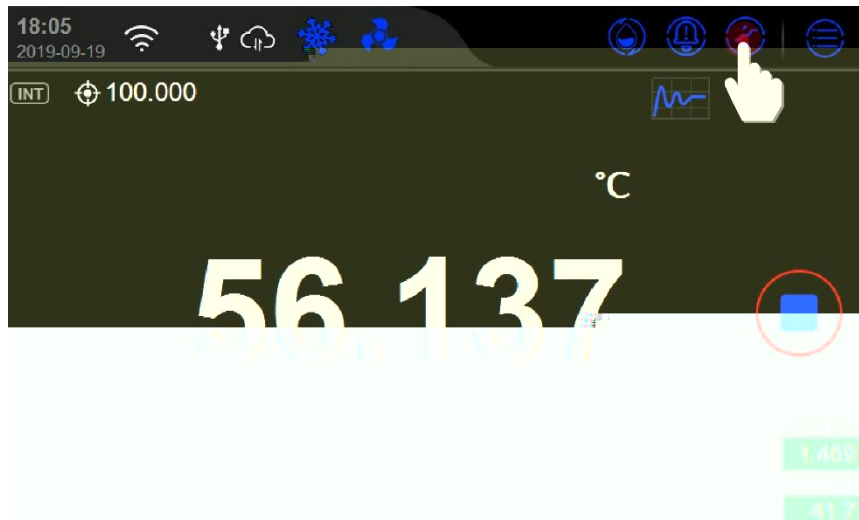
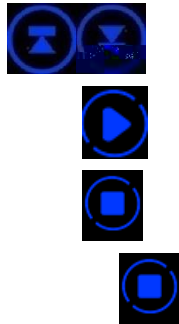
3.9









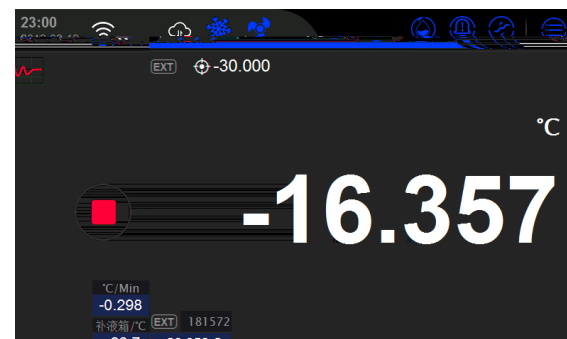


3.10



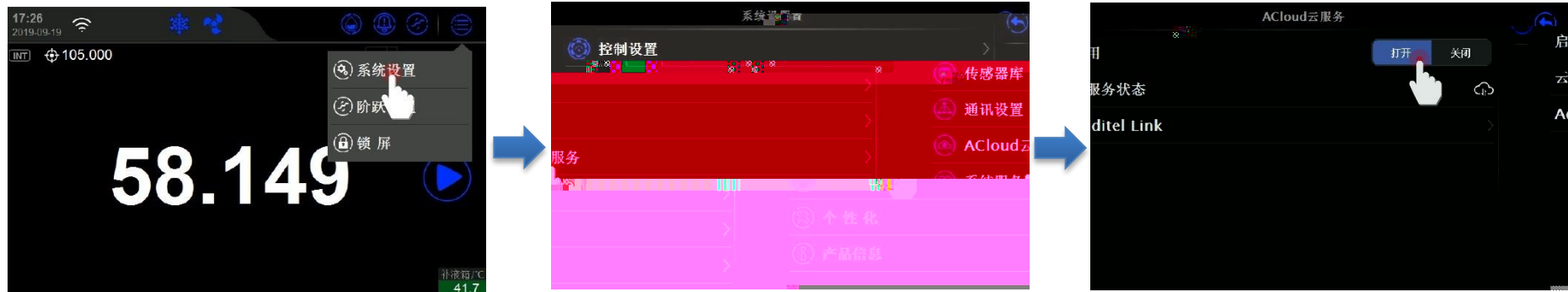


0



3.11 APP

m





N

" "

" " " "

"

"

Additel Link

邮箱/用户名

密码

[登录](#)

[语言](#) [无法登录?](#)

[没有账号? 注册](#)



注册

注册

邮箱 [获取验证码](#)

验证码

用户名

密码

[注册](#)

[已有账号? 登录](#)



" " " "

" "



3.12

/

3.13



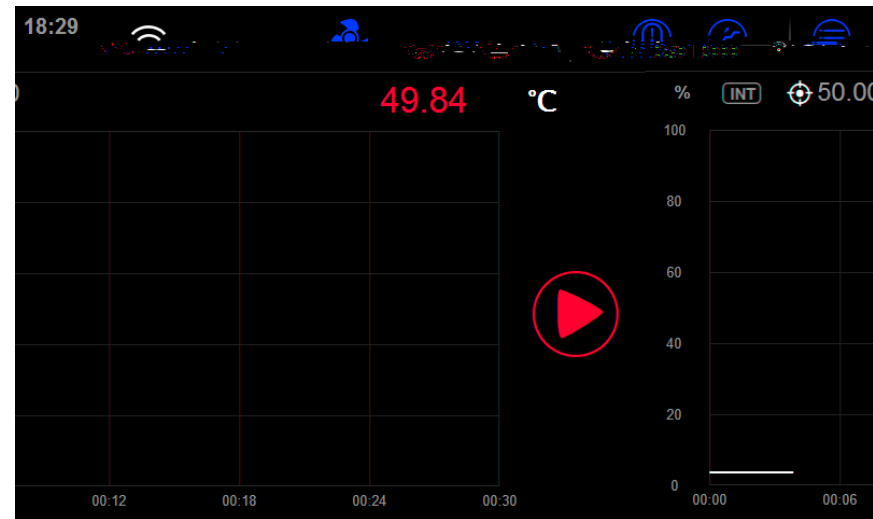
3-9

:

0%

100%

0% 100%



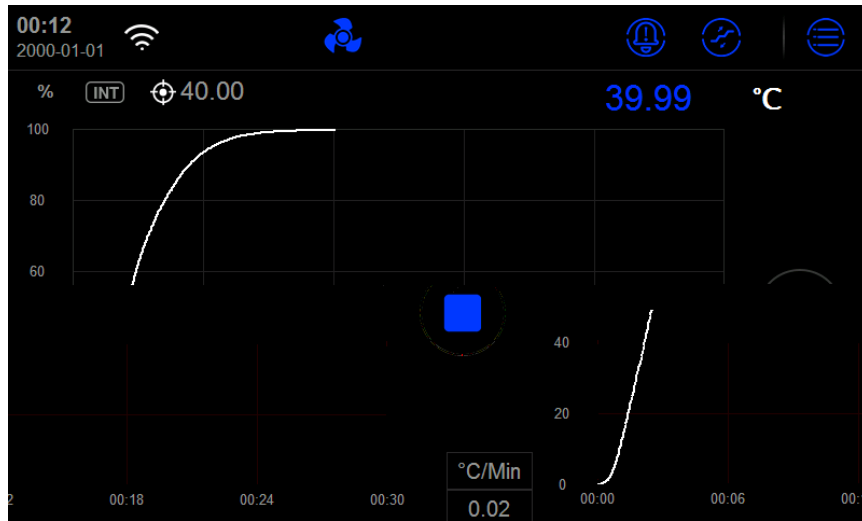
3-9

3-10

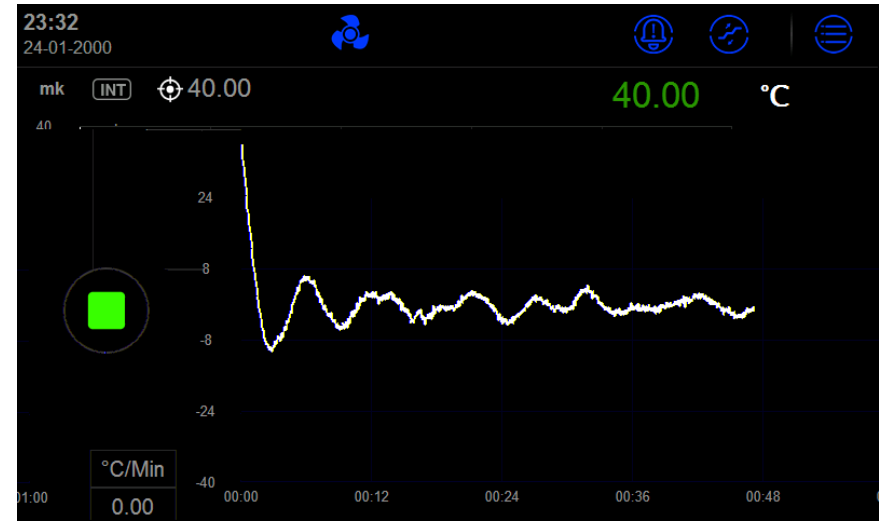
3-11

:

(mk)



3-10



3-11

3.14

-

3.15



3-12 

3-12 

3-13 

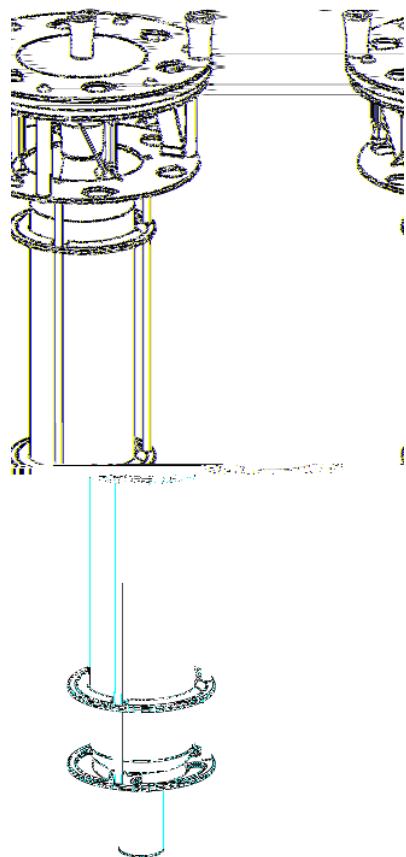
3-14 



SD

3.16

;



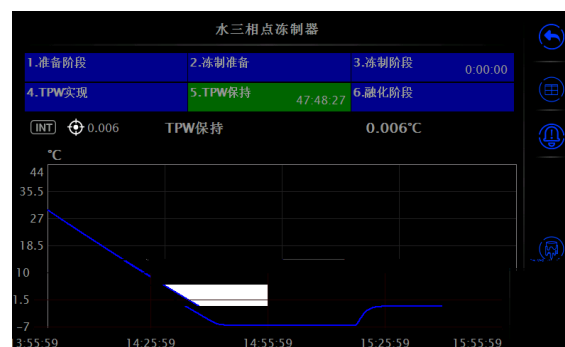
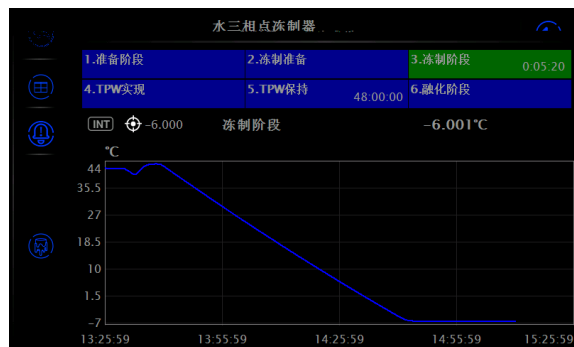
" "

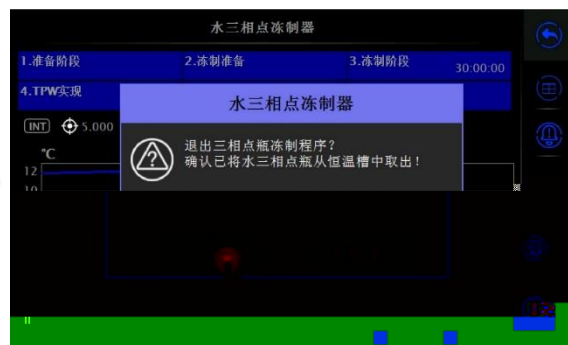
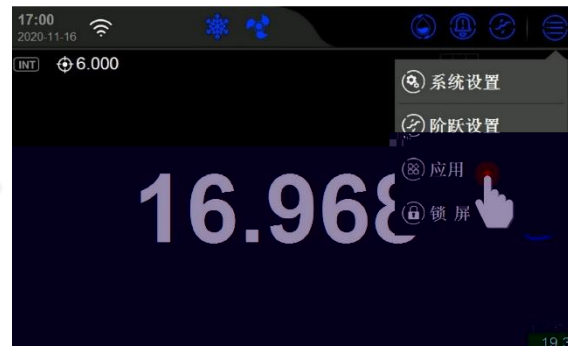
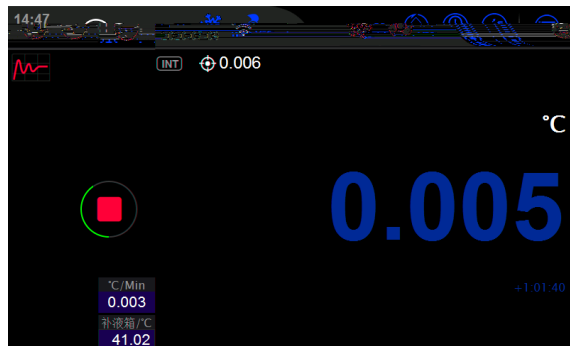
" "

" "

5min 5min

0.006





3.17

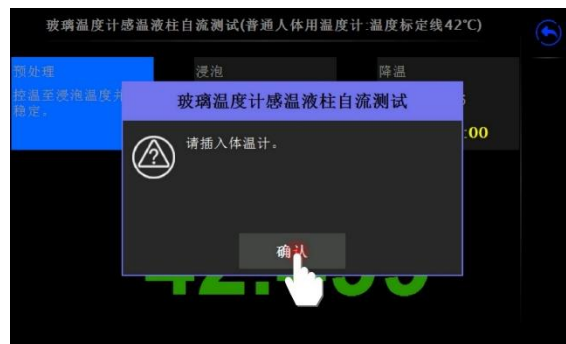
" " " "

" "

" " " " " " 3min

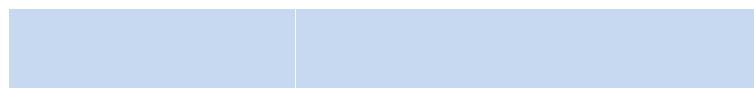
" " 3min " "

" "





4.1

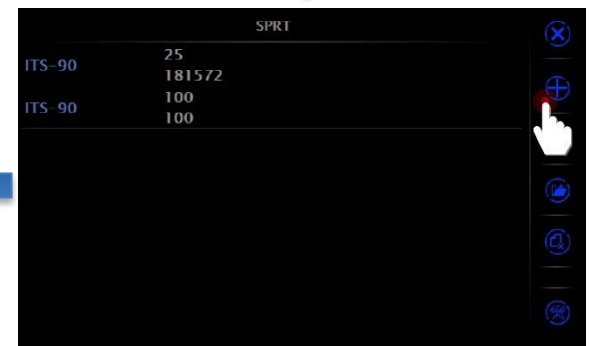




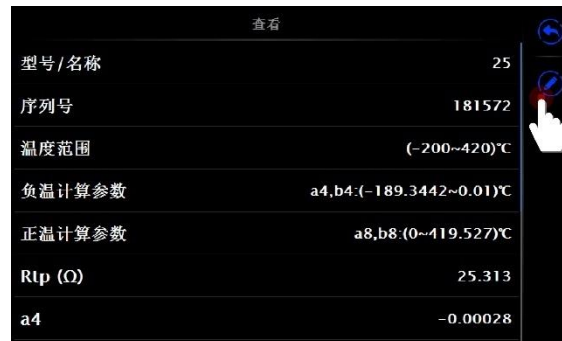


4.2

NL O



NL O



4.3

以太网 ✕

地址获取

DHCP

手动

IP地址	0.0.0.0
子网掩码	0.0.0.0
网关	0.0.0.0
8000	端口号
40:BD:32:E7:AF:F7	物理地址

✔

	L	

DHCP

4.4



L		NO L
		NO
		NO

H



H



H

H		
	L	

4-5

DHCP

4-5



4.6



L		L

4.4 ACloud

LL

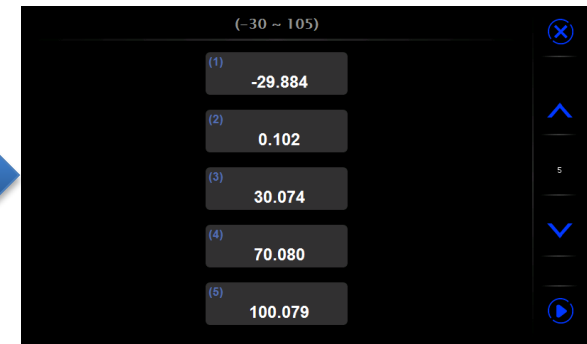
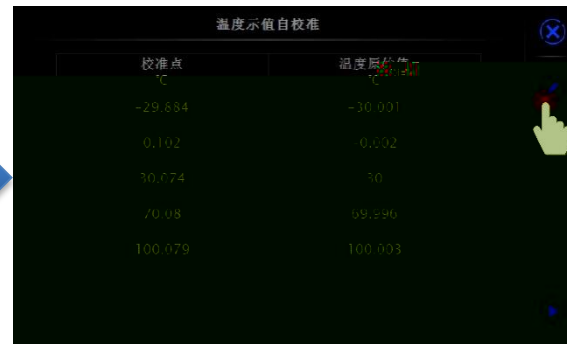
L



LL

4.5





“ ” “ ” “ ”



温度示值自校准

校准点 °C	温度原始值 °C
-29.884	-30.001
0.102	0.002
30.074	30
70.08	69.996
100.079	100.003



温度示值自校准

手动校准

校准数据



手动校准

设定点 °C	内部温度值 °C	温度原始值 °C	ExtRef °C	
-30.000		-30.000	-30.000	▶
0.000		0.000	0.000	▶
30.000		30.000	30.000	▶
70.000		70.000	70.000	▶
105.000		105.000	105.000	▶

2019-09-19



温度示值自校准

校准点 °C	温度原始值 °C
-29.684	-30.001
0.102	0.002
30.074	30
70.08	69.996
100.079	100.003



温度示值自校准

手动校准 >

校准数据输入 >



校准数据输入

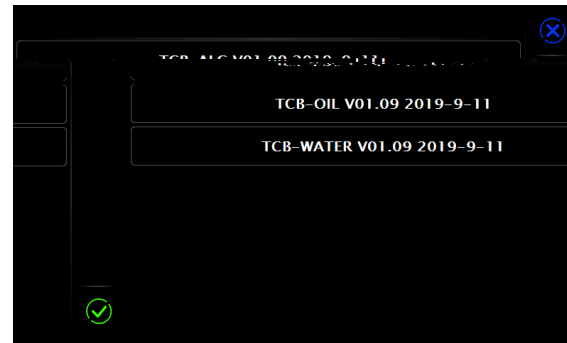
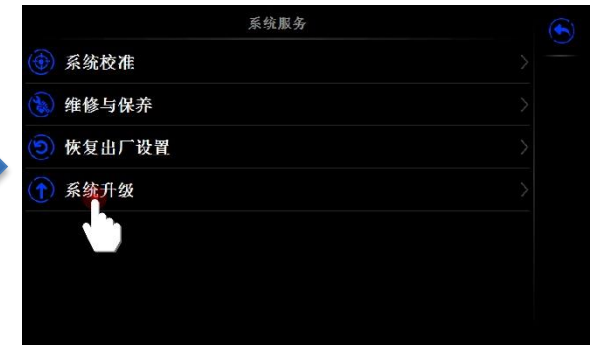
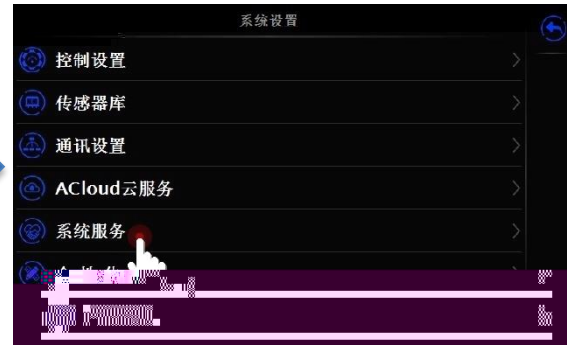
设定点 °C	内部温度值 °C	Ext.Ref °C
-30.000		
0.000		
30.000		
70.000		
105.000		

2019-09-19

O O

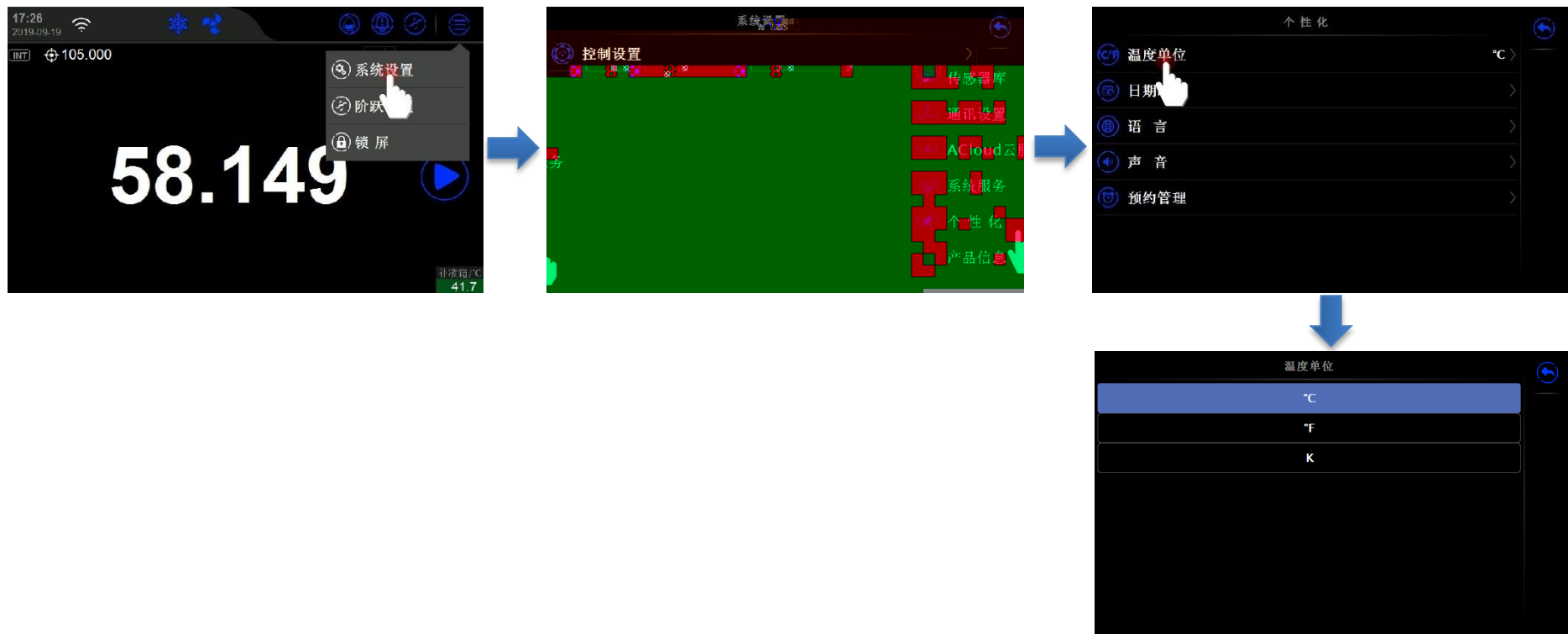
N



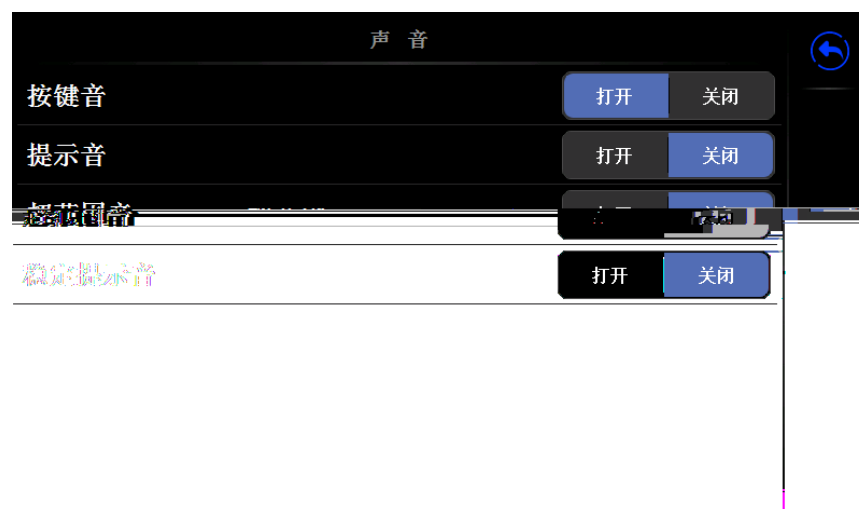


4.6

ConST



4.8





4.7

1.

2.

WiFi

3.



